



HORN AUSTRALIA
FURNITURE

HAPPY

Mother's Day

Beech

White

THE MONARCH IS
BACK!

Monarch MKIII †  **HORN** AUSTRALIA
FURNITURE

Open: 1660 x 870 x 743mm | Closed: 1005 x 440 x 760mm

Ideal for maximum functionality in minimal space • Great amount of storage and workspace • Large opening for quilting and embroidery machines • **3 position lifter** • Available in Beech or White

20%
off!

\$799
RRP \$999

When closed

Classics Range



Beech

Southern Ash

White

When closed

Crown MKIII † HORN AUSTRALIA FURNITURE

Open: 1290 x 440 x 743mm | Closed: 645 x 440 x 760mm

• This compact cabinet fits in almost any space • Large opening for quilting and embroidery machines • Unique **three position lifter** for your sewing machine • Compact • Available in Beech, Southern Ash or White

Over 15% off!

RRP \$1,199
\$999



When closed



Beech

White

Outback MKII † HORN AUSTRALIA FURNITURE

Open: 1650 x 1160 x 750mm | Closed: 860 x 560 x 770mm

A compact cabinet for all the larger machines • Full sized back flap for extra support • Extra depth compared to standard range • Plenty of storage • **3 position lifter** • Available in Beech and White **Bonus** insert included (RRP \$195) for flatbed sewing



Beech

White



20%
off!

RRP \$1,799

\$1,439



When
closed

Sovereign MKIII †

Open: W: 2530 x D: 2040 x H: 743mm | Closed: W: 1265mm x D: 560 x H: 760
Plenty of workspace to the right and left of your sewing machine for quilting, curtains and dressmaking • Unique **three position lifter** for your sewing machine
• Handy storage • Lockable for child safety • Available in Beech or White

Beech

White



\$1,499



When
closed

Nullarbor*

Open: 1850 x 1030 x 740mm | Closed: 1100 x 515 x 760mm
Looking for more legroom? The Nullarbor won't disappoint! Larger opening for quilting and embroidery machines • Storage for overlocker and accessories • **3 position lifter** • Available in Beech or White

Beech

Southern
Ash



RRP \$1,299
\$1,169

10%
off!

When
closed

Kensington MKII †

Open: 1790 x 1675 x 743mm | Closed: 1090 x 565 x 760mm
Have room to use and store both sewing machine and overlocker • Backleaf for additional workspace • Swivel trays and large storage bin • Deep drawer for storage • **3 position lifter** Available in Beech and Southern Ash

** - Tailormade cabinets come fully assembled

While stocks last, sorry no rain checks.
Specials apply only to the cabinets and their specific finishes as advertised.

Arrow

White



20%
off!

RRP \$1,223
\$978

When
closed

Kookaburra Cutting Table † arrow

Open: W 1780 x D 1010 x H 930mm | Closed: W 510 x D 1010 x H 930mm

Expansive cutting surface and dynamic storage •

2 fold out leaves create a 178cm x 102cm cutting surface for large projects •

Handy storage • Lockable for child safety • Available in White



White

\$1,799



Side
view

Ava Embroidery Cabinet † arrow

W 900 x D 590 x H 890mm

Heavy-duty surface reduces vibrations and secures multi-needle embroidery

machines in place • 4 large shelves designed to hold up to 28 thread cones •

Sturdy design with locking industrial casters for stability and easy mobility •

70kg weight limit

When
closed



White

RRP \$1,249
\$978

20%
off!



Bandicoot Sewing Cabinet † arrow

Open: W 1520 x D 430 x H 740mm | Closed: W 760 x D 430 x H 740mm

3- position hydraulic lift • Large lift opening accommodates most standard sewing machine

Thread spool storage on door for immediate access • Sturdy design with heavy-duty casters

† - RTA: Ready To Assemble Flat Pack * - Only available assembled



Crafting Tables

10%
off!

RRP \$399
\$359

Foldaway Table †

1050 x 550 x 717mm (115mm when folded down) | Cut out size: 61 x 33cm
• Offers free-arm and flatbed sewing for large sewing machines
• Support up to 18kg sewing machines • 2 wheels on the underside for easy movement • Steel locking legs • Available in White



When
closed

White



\$499

White

Craft & Hobby Cutting Table †

Open: W 1500 x D 1610 x H 915mm / Closed - W 340 x D 940 x H 915mm
Large working area, perfect for cutting out patterns • Inbuilt ironing board for easy access • Rounded corners so fabric doesn't snag • Lockable castor wheels for mobility and stability • Available in white

90 degree
tilt

RRP \$1,399
\$1,259

10%
off!

White

Height Adjustable Table †

Open: W 1600 x D 900 x H 720mm / Closed - W 1600 x D 710 x H 1330mm
61cm x 33cm cut out • Brand NEW flat bed design means no lip with the clear Perspex inserts • On castors for easy movement to a suitable sewing position • 90 degree tilt • Available in white



Tailormade

American
grey oak



RRP \$2,099
\$1,784

**15%
off!**

Quilter's Vision * TAILORMADE

Open: W 1800 x D 1390 x H 760mm / Closed - W 1420 x D 515 x H 760mm
Large drawers for fabric and notions •

Machine lift platform 58.5cm x 29cm rated for 19KG • Storage space for an overlocker and sewing machine • Available in American grey oak

Teak

White



RRP \$1,799
\$1,529

**15%
off!**

Quilter's Dream * TAILORMADE

Open: W 1800 x D 1390 x H 760mm / Closed - W 1420 x D 515 x H 760mm
Large drawers for fabric and notions •

Machine lift platform 58.5cm x 29cm rated for 19KG • Storage space for an overlocker and sewing machine • Available in teak and white

RRP \$1,149

\$976

87cm

RRP \$1,249

\$1,061

95cm

**15%
off!**

American
grey oak

Beech

White



Cutting Table * TAILORMADE

2 heights available - 87cm / 95cm

Open: W 1810 x D 1000 x H 870/950mm

Closed - W 510 x D 1000 x H 870/950mm

Magnetic points for extra stability • Drawers

Cutting surface 1.8m x 1m • Available in American grey oak, beech and white

American
grey oak

White



**15%
off!**

RRP \$1,499
\$1,274

When
closed



Eclipse * TAILORMADE

Open: W 1780 x D 1560 x H 745mm

Closed - W 1100 x D 500 x H 760mm

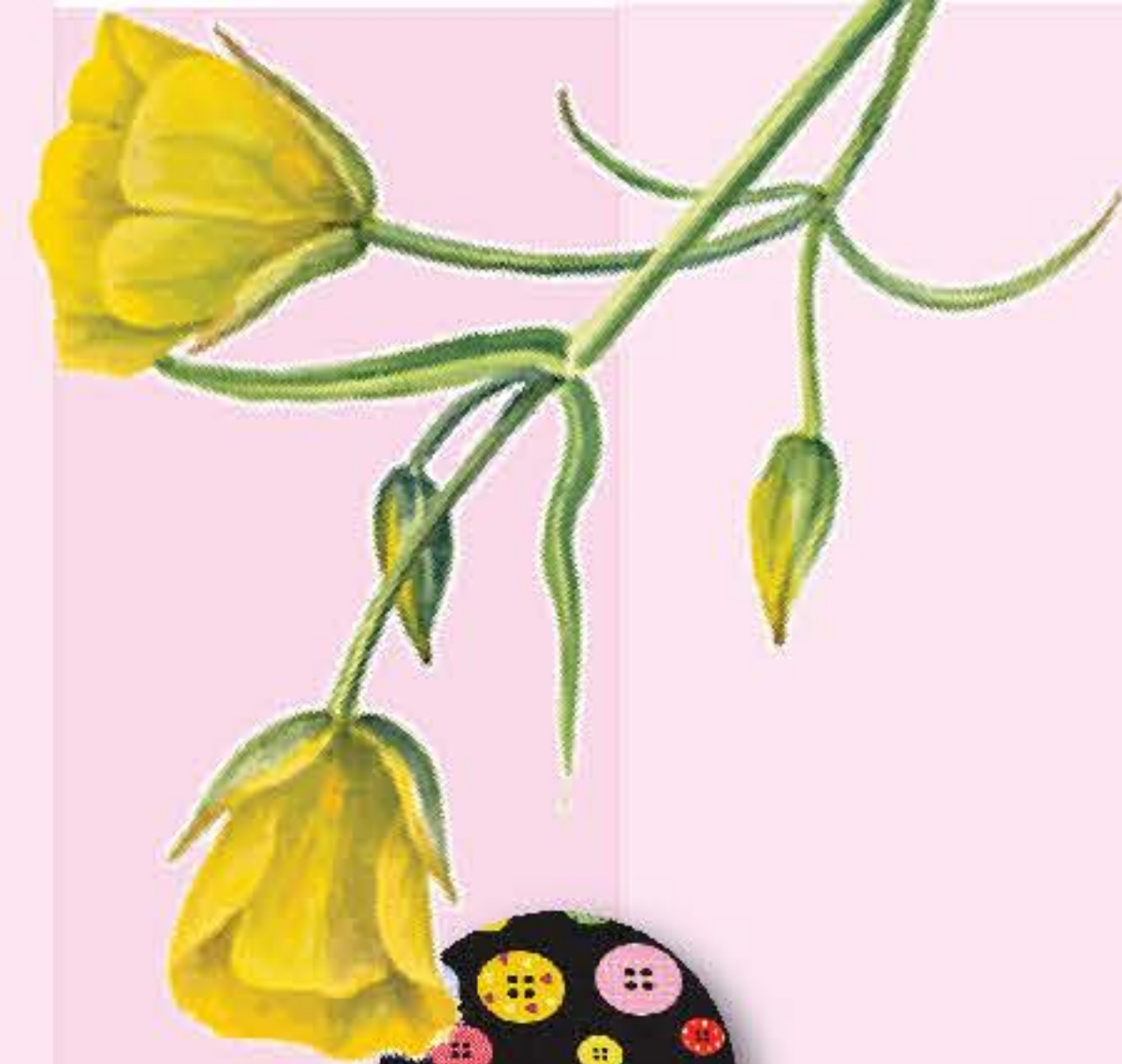
Left & right leaves available • Generous storage space for an overlocker and sewing machine • Two large drawers for fabric and notions • German quality

3-step air lift • Spacious leg room and foot rest • Available in American grey oak and white





Chairs



RRP \$325
\$260

20% off!



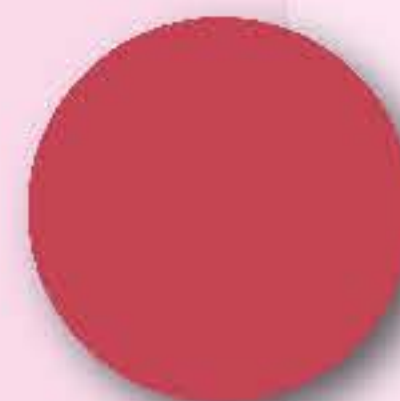
Button



Pinwheel



Fluoro



Red

- Horn Sewing Chairs**  **HORN FURNITURE**
- Hidden storage compartment under the seat
 - 5 castors for easier mobility
 - Adjusts from low of 46cm to high of 56cm
 - Solid wooden chair base and back support arms
 - Available in designs Pinwheel, Buttons and Fluoro

Koala Furniture SewComfort Chairs



- Ergonomic design
- Footrest
- 6-way adjustments for the perfect position
- Extends in height to accommodate for all setups
- Available in 3 fabric colours and 2 base finishes

Fabric

Wine

Oak

Jade

Sapphire

Base

American
birdseye
maple

Asian
golden
teak

\$479



Elements



This modular unit is ideal for those short on space or for those who want the ability to customise the best setup to suit their needs. Simply mix and match, add units to create more storage or sewing areas and alter their position to suit you and your space!



\$349

E

Sewing Desk

W 1205 x D 500 x H 734mm

A spacious sewing table with a manual lift mechanism for flatbed sewing ♦ Sturdy construction to allow for strong support for machines



\$299

B

Overlocker and Embroidery Machine Cabinet

W 805 x D 500 x H 734mm

Sturdy and spacious workspace specially designed for overlockers and embroidery machines ♦ Features vertical storage for quick access



\$330

D

Drawers with 4 Tubs

W 500 x D 500 x H 734mm

Lightweight see-through removable drawers ♦ Ideal for organising tools ♦ Quick and easy access



\$649

A

Cutting Table

W 1000 x D 500 x H 902mm

Ideal cutting height to help reduce cutting fatigue compared to standard tables ♦ Designed for large cutting mat ♦ Plenty of storage

www.horn.com.au